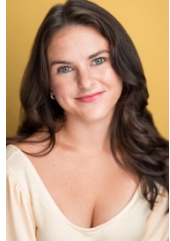


Erin Neupauer

Website: <https://www.erinneupauer.com>
erin.neupauer@gmail.com, (484)-661-7801
Southeast rep: tvfilm@marilynsagency.com
Midwest rep: laura@heymantalent.com



FILM

<i>The Husband (Amazon Prime)</i>	Anna (Lead)	2121Productions, Robert Longo
<i>Drum Bum (Amazon Prime)</i>	Maggie (Lead)	HealyBrothersProductions, Tim Healy
<i>Veronica Palm Goes on at 7</i>	Viv/Veronica (Lead)	SMH Productions, Barrett Schuler
<i>People Eater</i>	Pat (Lead)	SecondHandHenry Prod., Dylan Davis
<i>Kalter Falls</i>	Lina (Lead)	CMProductions, Carter Mason
<i>ABC's (Always Be Smiling)</i>	Caisey (Supporting)	Living Proof Pictures, Brandon Lay
<i>CLENCH</i>	Young Rita (Supporting)	Living Proof Pictures, Brandon Lay
<i>Small</i>	Cindy (Lead)	Doherty Films, Emily Flynn
<i>Inanimate</i>	Erica (Lead)	MegaMiniMedia, Meg Kelly
<i>It's Not About the Car</i>	Marla (Lead)	MegaMiniMedia, Stefan Fulton
<i>Kit-Cat</i>	Annette (Lead)	Alta Matos
<i>Parallel</i>	Jennifer (Lead)	Michael Braden
<i>On Our Way</i>	Olive (Lead)	Jillian Wilson
<i>The Glasses</i>	Chloe (Lead)	Wanting Zhou
<i>Matt and Spratt Take Jersey City</i>	Principal (Supporting)	Jackie Fiorillo
<i>Tears of Our Reality</i>	Red Woman (Supporting)	Maya Pegues
<i>Skin and Bones</i>	Kate (Lead)	Tommy Rinaldi

THEATRE

<i>Doubt</i>	Sister James (Principle)	Philly Stagecrafters, Dave Ebersole
<i>Horse Girls</i>	Ashleigh (Principle)	NY Vino Theatre, Lily Marcheschi
<i>Proof</i>	Catherine (Principle)	Mondanaro Theatre, Scott Alan Smith
<i>Trouble in Mind</i>	Judy (Supporting)	Civic Theatre, Gabe Moss
<i>Tattoo You</i>	Tammy (Principle)	Mondanaro Theatre, Scott Alan Smith
<i>It's Not About the Car</i>	Marla (Principle)	Mondanaro Theatre, Scott Alan Smith
<i>Titanic (Durang)</i>	Victoria (Principle)	Savannah Film Studios, Gabriel Felty
<i>Goodbye, Babylon</i>	Geena (Principle)	SCAD Museum, Trevor Browning
<i>As It Is In Heaven</i>	Polly (Supporting)	S. Orange Arts Center, Melanie Weir
<i>As You Like It</i>	Celia (Principle)	Seton Hall University, Peter Reader
<i>Learned Ladies</i>	Armande (Principle)	Seton Hall University, Peter Reader

TRAINING

<i>(NYU, SHU)</i>	Contemporary, Uta Hagen
Gretchen Hall	Private Lessons, Monologue Work
Lee Aaron Rosen	
<i>(SCAD)</i>	
Craig Anton	On-Camera Comedy, Commerical
Scott Alan Smith	On-Camera Drama
Meg Kelly	Meisner, Realism, Anti-Realism
John Prosky	Branding, Monologue Work
Joan McMurtery	Monologue Work, Audition Prep
David Storck	Improvisation for Stage and Screen
<i>(Voice)</i>	
Gail Grossman	Vocal Coach (Classical, Opera)
Ken Magos	Vocal Coach (Musical Theatre)
Jamie Keena	Vocal Coach (Musical Theatre/Pop)
<i>(Actors Connection)</i>	
Kim Miscia	Casting Director Seminars
Nick Pecario	
Ross Shenker	
Freya Krasnow	

BIO

Eye Color: Green
Height: 5'3"
Weight: 120 lbs
Hair Color: Dark Brown
Build: Petite
Location: United States
Full Driver's License/Passport

SPECIAL SKILLS: Improvisation, Voice (Mezzo-Soprano, 10+ years), Stage Combat, Sword Fighting, Dance-Musical Theatre (3 years), Tap (1 Year). Beginner Piano, Basketball, Soccer, Swimming, Yoga, Voiceover, Teaching Artistry, Princess Parties, Intermediate Spanish Language, Country Accent, British Accent, Cockney Accent, Goat Noises, Pigeon Noises, Pug Lover

M.F.A Performing Arts, Savannah College of Art and Design
Walt Disney World Entertainment: Character Performer